

Welcome Home!



2 Tiger Brook Ln, Chester, NJ 07930

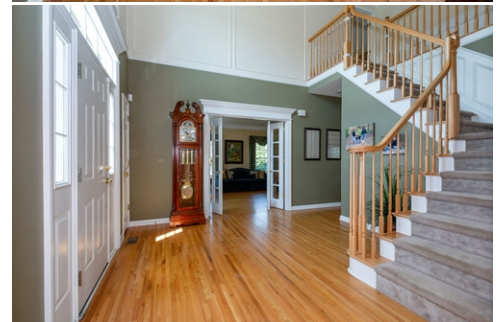
[WEB: 2TigerBrookLn.com](http://2TigerBrookLn.com)

- » **Beds:** 4 | **Baths:** 2 Full, 1 Half
- » **MLS #:** 3562084
- » Single Family
- » 12 Room Colonial in Prime Neighborhood of Chester - Cul-de-Sac and Walking Distance to Town
- » Gleaming Hardwood Floors Throughout, Custom Millwork, Skylights, Finished Lower Level with Movie Theater
- » Gourmet Kitchen with Cherry Cabinetry, Granite, Desk Area and Open to Family Room
- » Professional Landscaping, Tiered Deck, Treel Lined Rear Yard, Koi Pond with Waterfall - Picture Perfect!
- » 2 Units Force Hot Air, Central Air, Natural Gas, Septic and Well

QR Code



\$ 865,000



Patsy Soden

(973) 713-2471 (Cell)
(908) 879-3374 (Direct)
(862) 345-3226 (E-Fax)
patsy@patsysoden.com
<http://www.patsysoden.com>



Chester/Long Valley
191 Main Street, Suite 2
Chester, NJ 07930
(908) 879-3374

Enjoy an enviable walk-to-town location in a suburban setting – just steps from all that Chester has to offer! This pristine center hall Colonial located on a cul-de-sac in the sought after Colby Farm neighborhood is a short walk to historic downtown shopping and dining with superb schools, walking trails, and gorgeous parks nearby.

Living is easy in this spacious 4 bedroom, 2.5 bath residence. No detail spared in this home that boasts beautiful architectural features throughout, high ceilings, crown molding and wainscoting, hardwood floors and loads of natural light. An open concept family room and kitchen are at the heart of the home, designed for today's lifestyle and perfect for entertaining, featuring an updated eat-in kitchen with granite counters & stainless steel appliances, gas-log fireplace and dual glass sliders leading to a tiered deck with pergola, koi pond with waterfall and a meticulously landscaped tree-lined backyard. Elegant living and dining rooms, a first-floor library/office with walls of built-ins, laundry center, half bath, back staircase to the upper levels, plus access to the three-car attached garage add more convenience and complete this level. The second-floor master suite includes a wall of built-ins, tray ceiling, his and her walk-in custom closets, dressing area, double linen closet, and a master bath with double vanities, walk-in

